

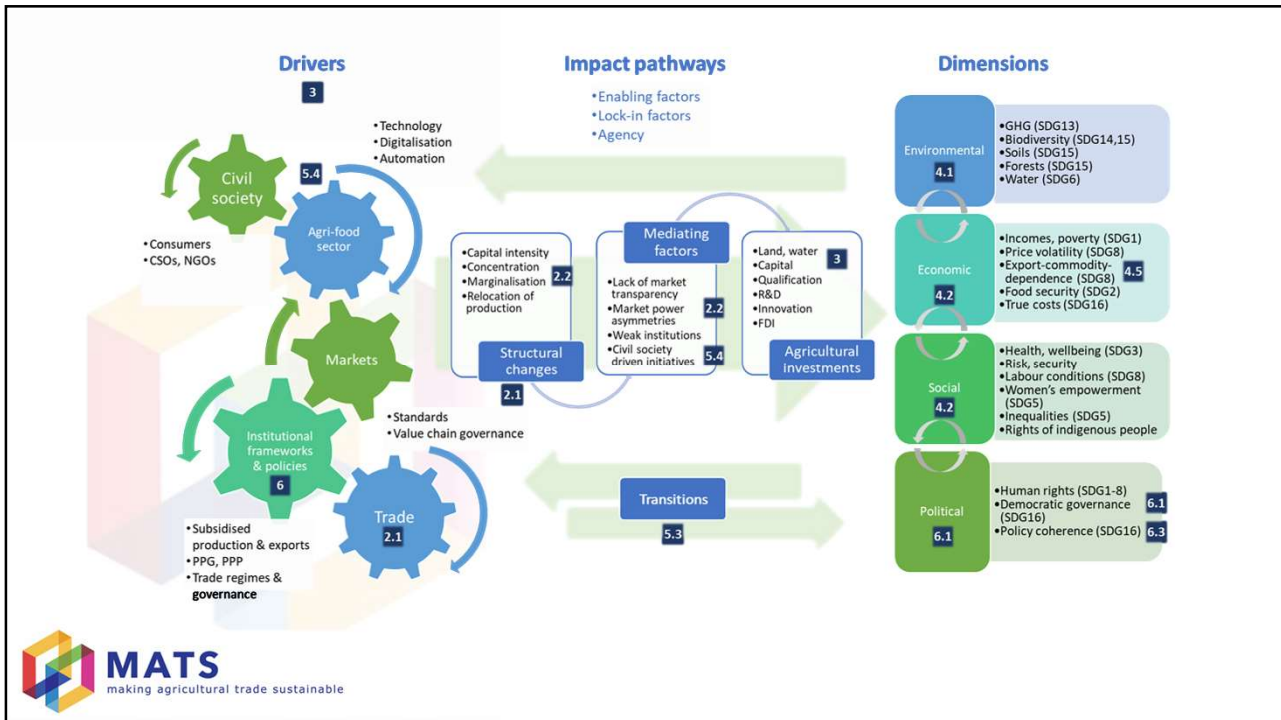
Linkages between agricultural trade, investments, environmental sustainability and human wellbeing

A review of current understandings in science, policy and practice

Karlheinz Knickel, University of Helsinki



1



2

The big picture

- **Interrelationships:** complex, context-specific, diverse, multi-dimensional, multi-level, multi-sector, multi-actor, feedback loops, ...
- **Trade impacts:** positive and negative, impact pathways & possible improvements are nothing straight forward
- **Related issues:**
 - *Increasingly intertwined & impactful local to global sustainability challenges, incl. climate change*
 - *Food, feed, bioenergy & related conflicting goals*
 - *Human rights, e.g., access to resources, gender equality, working conditions*
 - *Concentration in agri-food sector, role of FDI, speculation in commodity markets*
 - *Food system vulnerabilities, dependencies, ... resilience, transformation*



3

Implications for further work in MATS

- **Multi-method:** country/regional/product case studies, systems modelling, institutional frameworks, policy coherence, political economy, participatory visioning/backcasting, enabling factors, lock-ins, transition pathways, agency
- **Multi-level approach:** 15 case studies to understand better & provide a sound grounding + opportunity for engagement with stakeholders; comparative CS & model-based analyses connect with higher level policy development
- **Engagement:** interaction between MATS project & manifold ongoing activities on sustainable agri-food trade: CSO & stakeholder activities, policy dialogues, policy development



4

Thank you!

- For questions/suggestions please get in touch:
- karlheinz.knickel@helsinki.fi
- Project website: <https://sustainable-agri-trade.eu/>
- LinkedIn group: <https://www.linkedin.com/groups/9164498/>
- Twitter: @MATS_H2020



5

Optional for discussion



6



2 Longer term trends.....

2.1 Globalization and trade

2.2 Horizontal and vertical restructuring of the global agri-food sector .

3 Drivers of change in agri-food systems and trade.....

4 Agricultural trade impacts

4.1 Environmental and climate impacts.....

4.2 Social and economic impacts.....

4.3 Transboundary impacts or spillover effects.....

4.4 Impacts of EU–Africa trade

4.5 Export-commodity-dependency of developing economies

5 Global goals and transitions

5.1 Relevant global goals

5.2 Resilience of agri-food systems

5.3 Transition pathways.....

5.4 Private sector practices and civil society initiatives.....

6 Institutional and policy frameworks

6.1 Key political economy issues

6.2 Interlinkages with the Common Agricultural Policy CAP).....

6.3 Challenges related to policy coherence

6.4 Relevant mechanisms and instruments.....

6.5 EU trade policy.....

7

Case study			Sustainable Development Goals*						
			SDG1	SDG2	SDG3	SDG 6	SDG 13	SDG 15	Others
Product	Main locus of FVC	Lead							
1. Coffee	Uganda, Tanzania	UH							
2. Oats	Finland, Sweden, Norway	UH							
3. Dairy	Finland	UH							
4. Food products	Sub-Saharan Africa	ESRF							
5. Poultry	Ghana	UPM							
6. Cacao	EU, Côte d'Ivoire	Oxfam							
7. Milk powder	EU, Africa	Oxfam							
8. Biofuels	EU, America, Africa, Asia	Oxfam							
9. Coffee	Tanzania, DR Congo, Burundi, Uganda, Ethiopia	Oxfam							
10. Beef	Germany, France, Italy, USA, Brazil, Argentina, Morocco, South Africa and Namibia	CRPA							
11. Beef, milk	Angola, Vietnam	CRPA							
12. Wine	South Africa	NWU							
13. Dairy	Germany, France, Italy, USA, Brazil, Argentina, South Africa, Zimbabwe, Algeria	CRPA							
14. Pork	EU, Brazil	UPM							
15. Food, etc.	EU, Tunisia	TNI							
Number of case studies per SDG			12	12	9	8	10	12	8

* SDG1 No poverty; SDG2 Zero Hunger; SDG3 Health, Well-being; SDG 6 Clean Water; SDG 13 Climate Action; SDG 15 Life on Land

8